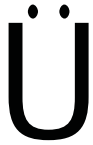


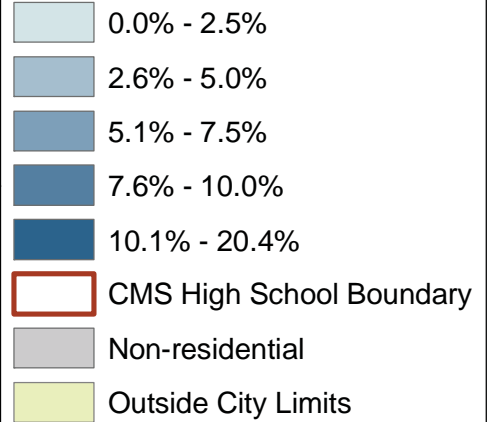
# Dropout Rate

## City of Charlotte Neighborhood Quality of Life NSAs

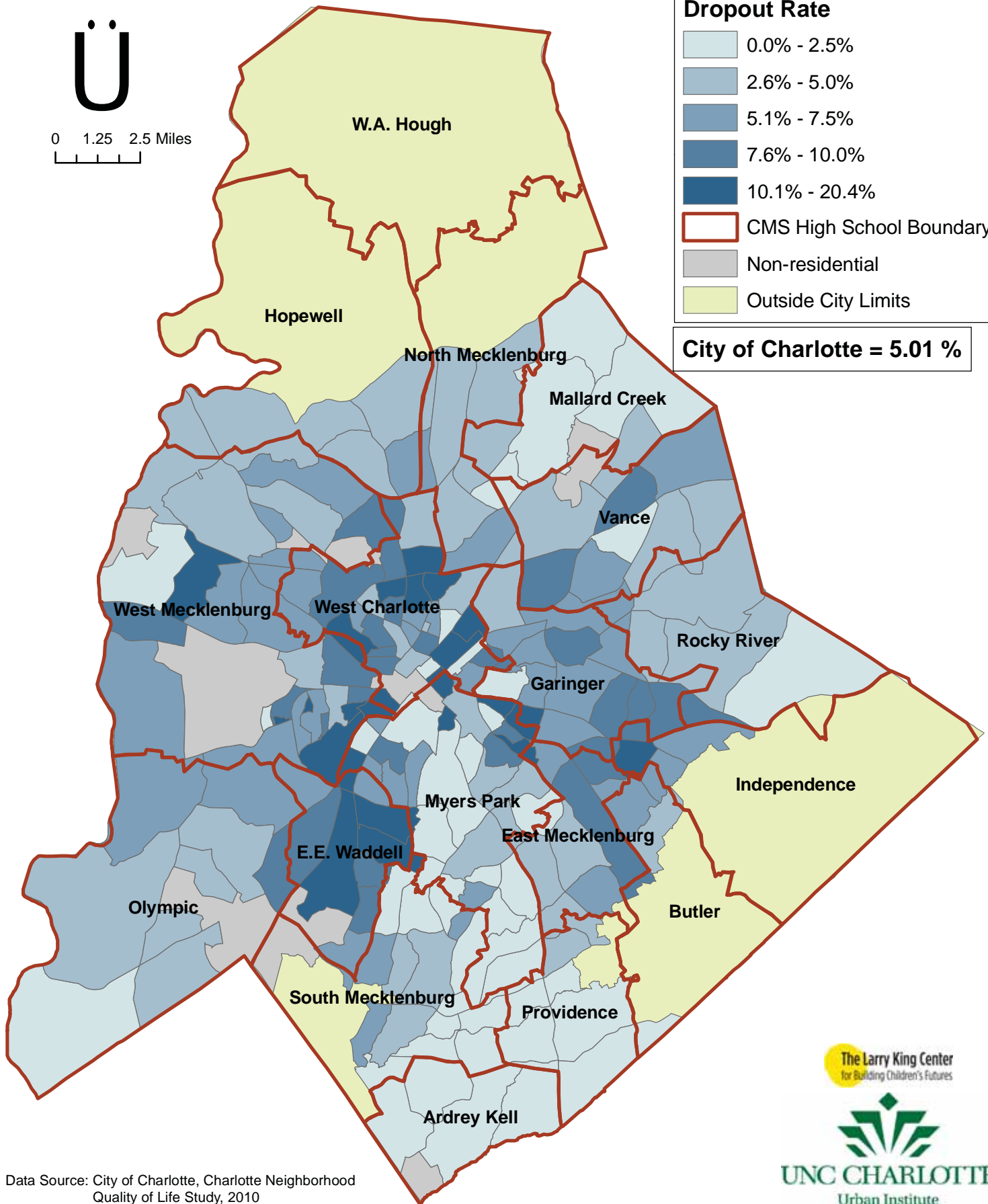


0 1.25 2.5 Miles

### Dropout Rate



**City of Charlotte = 5.01 %**



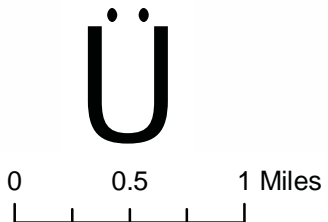
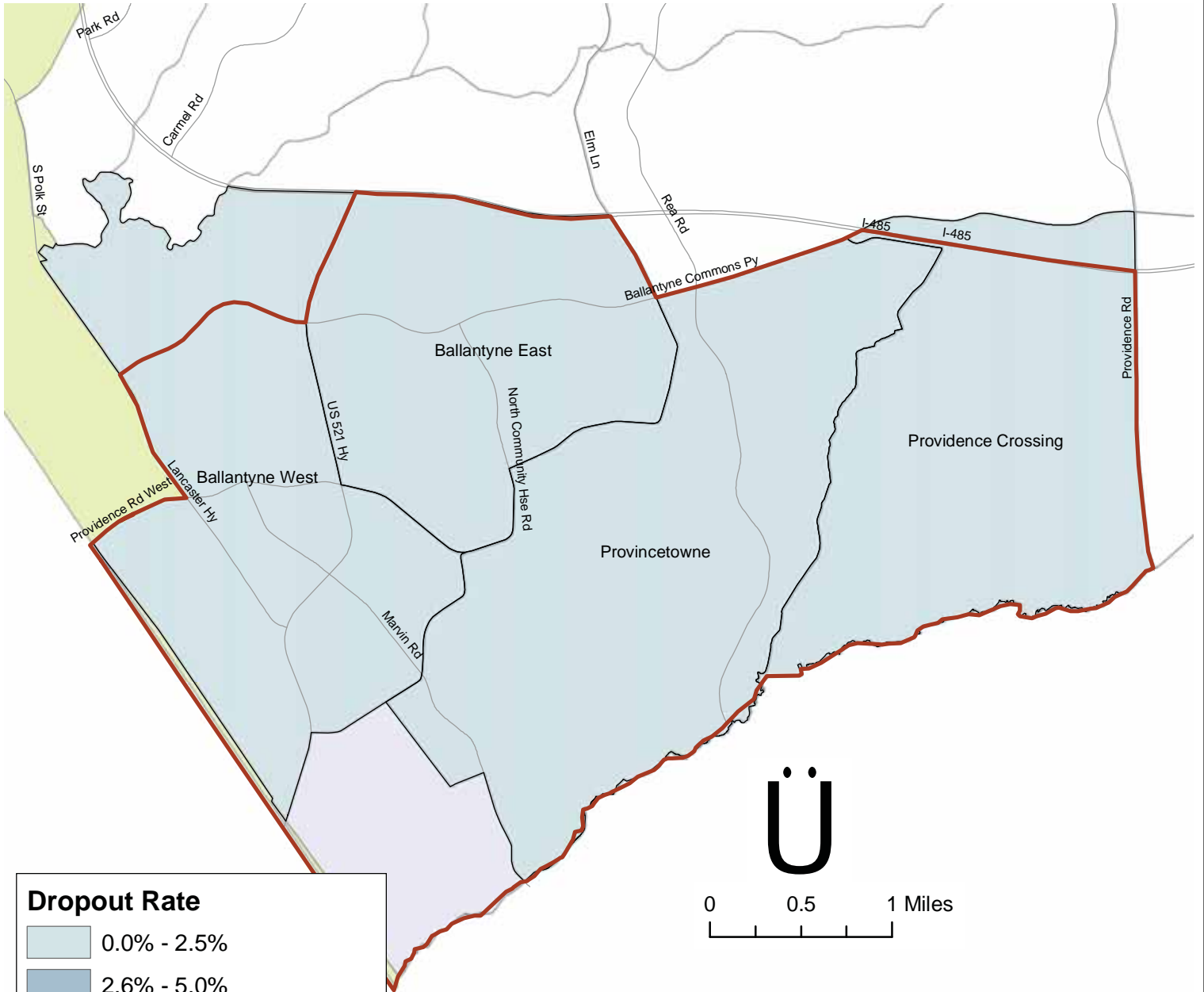
Data Source: City of Charlotte, Charlotte Neighborhood Quality of Life Study, 2010

The Larry King Center  
for Building Children's Futures



# Dropout Rate

## Ardrey Kell High School NSAs

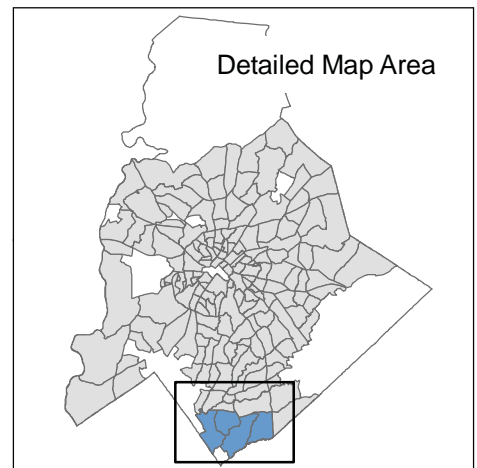


**Dropout Rate**

- 0.0% - 2.5%
- 2.6% - 5.0%
- 5.1% - 7.5%
- 7.6% - 10.0%
- 10.1% - 20.4%
- Ardrey Kell High Boundary
- Non-residential
- Outside City Limits
- Roads

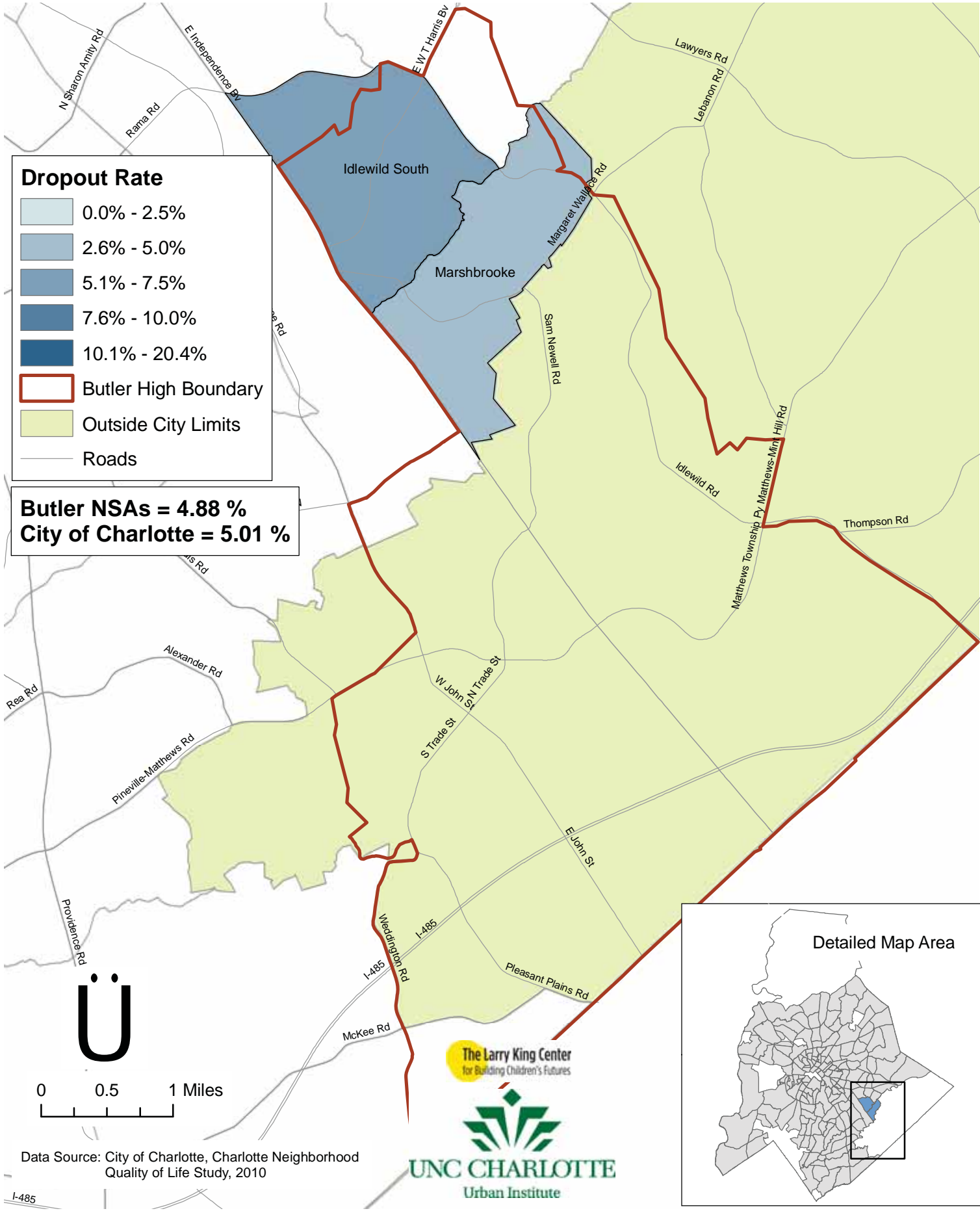
**Ardrey Kell NSAs = 1.25 %**  
**City of Charlotte = 5.01 %**

Data Source: City of Charlotte, Charlotte Neighborhood Quality of Life Study, 2010



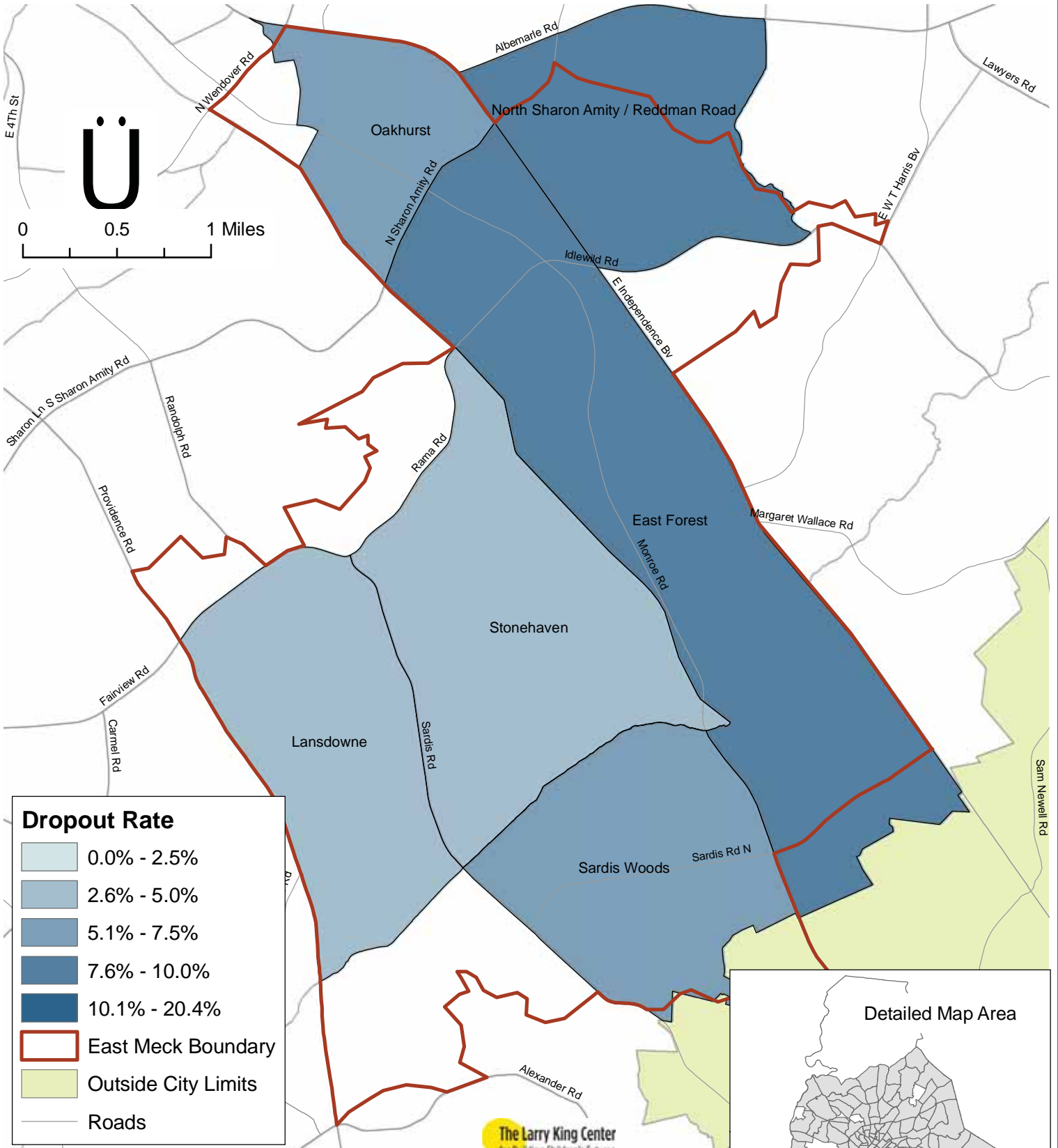
# Dropout Rate

## Butler High School NSAs



# Dropout Rate

## East Mecklenburg High School NSAs



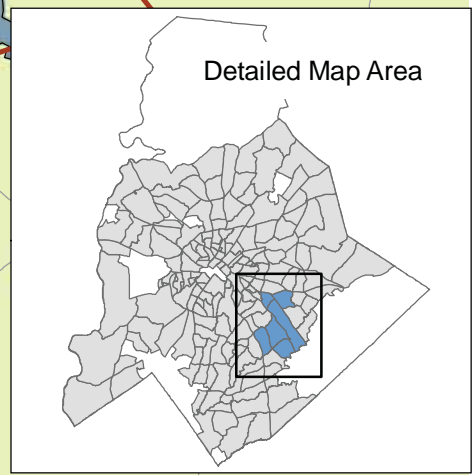
**Dropout Rate**

- 0.0% - 2.5%
- 2.6% - 5.0%
- 5.1% - 7.5%
- 7.6% - 10.0%
- 10.1% - 20.4%
- East Meck Boundary
- Outside City Limits
- Roads

**East Mecklenburg NSAs = 7.30 %**  
**City of Charlotte = 5.01 %**

Data Source: City of Charlotte, Charlotte Neighborhood Quality of Life Study, 2010

The Larry King Center  
for Building Children's Futures



# Dropout Rate

## E.E. Waddell High School NSAs

