

Neighborhood Characteristics

	Idlewild Elementary Feeder Neighborhoods	Mecklenburg County
Population	10,414	944,373
Median Household Income	\$26,957 to \$65,485	\$61,973
Percent Homeowners	48.9%	60.5%
Percent of Persons Receiving Food Assistance	28.4%	17.4%
Percent of Births to Adolescents	2.3% to 15.6%	4.4%
Juvenile Incident Rate per 100,000	0 to 2,542	1,586
Violent Crime Rate per 100,000	371 to 1,737	578
Underemployment	11.4%	9.5%
Students Attending Neighborhood Schools	64.7 to 82.8%	75.4%

The school boundary zone for Idlewild Elementary consists of a part of 5 neighborhood profile areas (see map on reverse). A smaller percent of residents in Idlewild feeder neighborhoods own their homes compared to the county average, and a higher percentage receive food assistance. One neighborhood has a higher incidence of juvenile arrests than the county average, and three neighborhoods have a higher percentage of births to adolescents. A larger percentage of adults are struggling with un- or under-employment.

The chart to the right illustrates the demographics of the students served at Idlewild Elementary. There is a higher percentage of economically disadvantaged students compared to the district as a whole, and a slightly higher student mobility rate. Poverty and high mobility are correlated with low academic achievement.

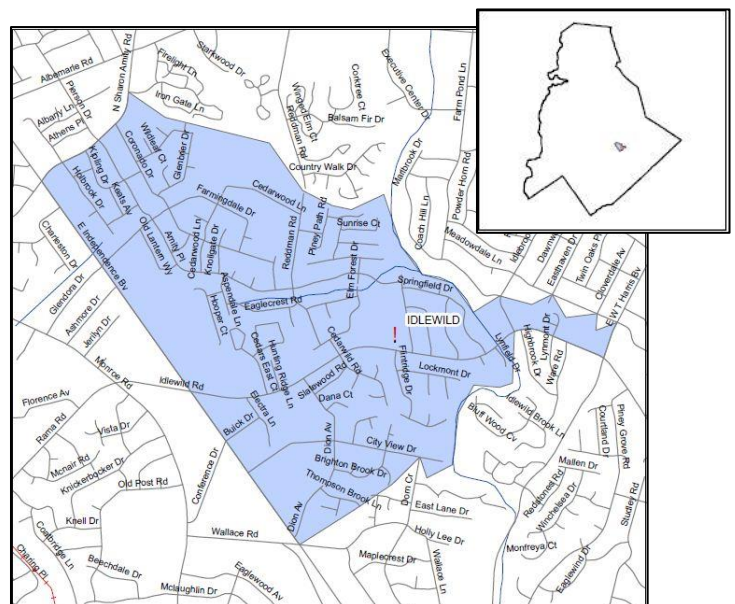
School Population

	Idlewild Elementary (PK-5)	CMS (PK-12)
Total Students	843	143,578
Asian	5.8%	5.2%
Black	47.2%	41.7%
Hispanic	35.6%	18.4%
White	9.6%	31.6%
Other	1.7%	3.1%
Economically Disadvantaged Students	77.4%	54.3%
Student Mobility Rate	18%	17%

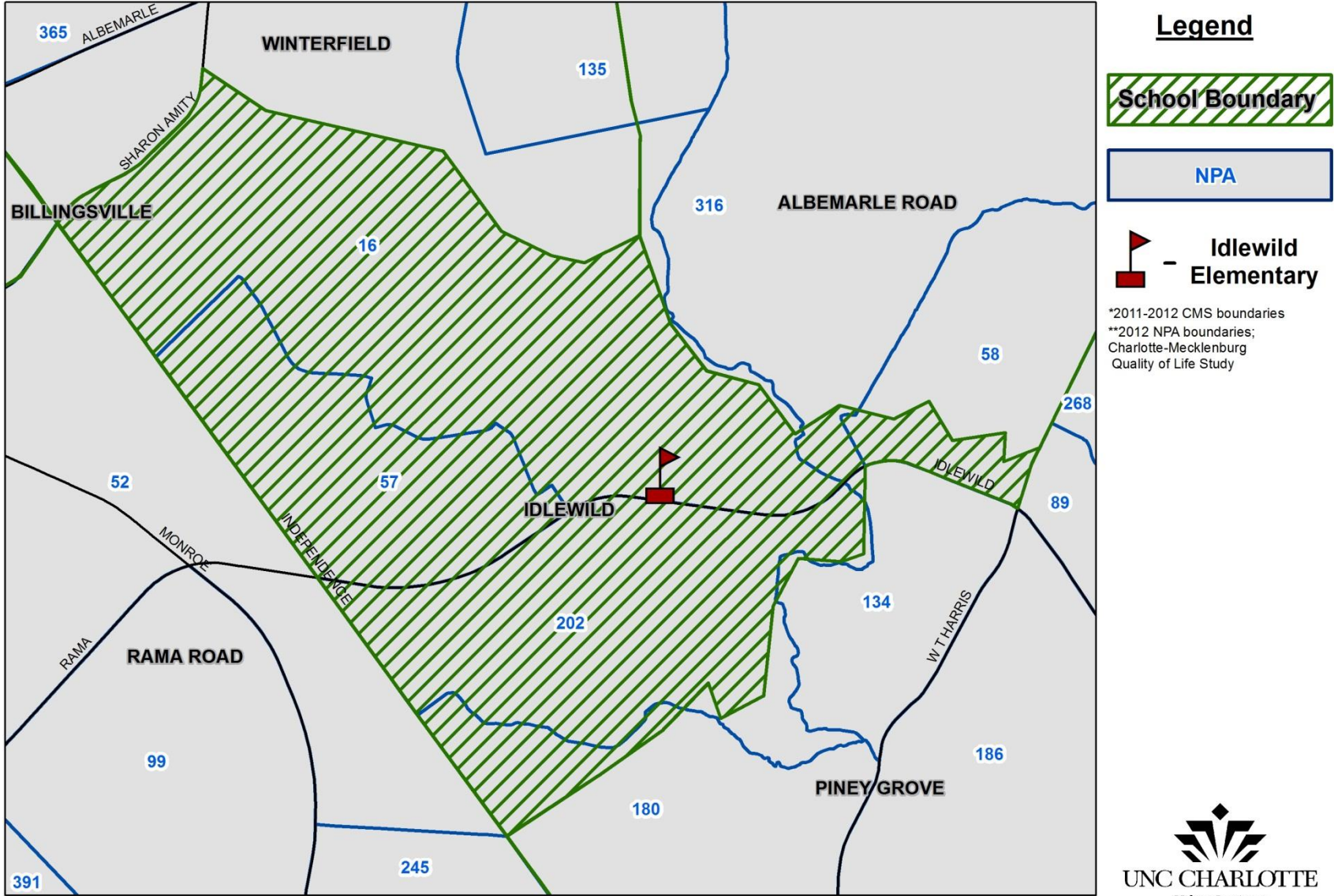
Academic Achievement Indicators

	Idlewild Elementary Feeder Neighborhoods	Mecklenburg County
Percent of Children on Grade Level	44.8% to 56.1%	67.5%
Dropout Rate	4.4% to 11.6%	3.2%
10 or More Unexcused Absences	10.9% to 20.2%	11.0%

All Idlewild Elementary feeder neighborhoods have a lower percentage of children on grade level than the county average. The dropout rate and the percentage of students with 10 or more unexcused absences is higher than the county average in almost every neighborhood, indicating a greater risk for low academic achievement.



Idlewild Elementary



Note: In 2012, the Quality of Life Study changed from 173 neighborhood statistical areas (NSA) to 464 neighborhood profile areas (NPA).

The NPAs that overlap with the Idlewild Elementary school boundary zone roughly correspond to the following three NSAs from the 2010 QOL: North Sharon Amity/Reddman Road, Idlewild South, and Idlewild Farms.